

Diagnostische toets

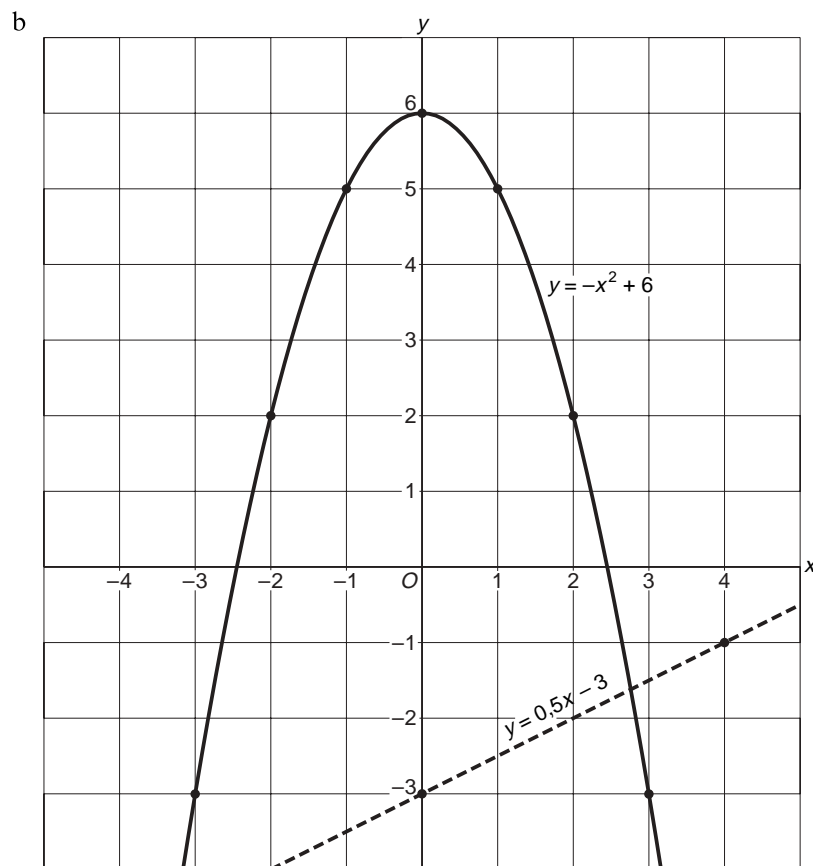
bladzijde 104

- 1** a $6 \cdot 5^2 =$
 $6 \cdot 25 = 150$
b $48 - 5 \cdot 3^2 =$
 $48 - 5 \cdot 9 =$
 $48 - 45 = 3$
- 2** a $-5 \cdot (-3)^2 =$
 $-5 \cdot 9 = -45$
b $-4^2 - (-4)^2 =$
 $-16 - 16 = -32$
- 3** a $-2,7^2 - 5 \cdot (-3,1)^2 = -55,34$
b $\frac{181 - 3,5^2}{10^2 + 5^2} = 1,35$
- 4** a $G = 25 \cdot 1,4^2$
 $G = 25 \cdot 1,96$
 $G = 49$
Dus 49 kilo
b $G = 25 \cdot 1,58^2$
 $G = 25 \cdot 2,4964$
 $G = 62,41$
Dus 62,41 kg
c Hij is $25 \cdot 1,72^2 - 25 \cdot 1,48^2 = 19,2$ kg zwaarder geworden.
- 5** a $y = -3x^2 + 7$
 $y = -3 \cdot 5^2 + 7$
 $y = -3 \cdot 25 + 7$
 $y = -75 + 7$
 $y = -68$
b $y = (x - 5)^2 - 8$
 $y = (-2 - 5)^2 - 8$
 $y = (-7)^2 - 8$
 $y = 49 - 8$
 $y = 41$
c $A = 4t^2 - 12$
 $A = 4 \cdot (-5)^2 - 12$
 $A = 4 \cdot 25 - 12$
 $A = 100 - 12$
 $A = 88$
- c $(15 - 3)^2 - 80 : 4^2 =$
 $12^2 - 80 : 16 =$
 $144 - 5 = 139$
d $160 : (8 - 7)^2 =$
 $160 : (1)^2 =$
 $160 : 1 = 160$
- c $(3 - 5)^2 : -2 + 8 \cdot 3^2 =$
 $(-2)^2 : -2 + 8 \cdot 9 =$
 $4 : -2 + 72 =$
 $-2 + 72 = 70$
d $-1^2 - (-3)^2 \cdot -22 =$
 $-1 - 9 \cdot -4 =$
 $-1 + 36 = 35$

6 $y = -x^2 + 6$

a

| | | | | | | | |
|-----|----|----|----|---|---|---|----|
| x | -3 | -2 | -1 | 0 | 1 | 2 | 3 |
| y | -3 | 2 | 5 | 6 | 5 | 2 | -3 |



c $y = 0,5x - 3$

| | | |
|-----|----|----|
| x | 0 | 4 |
| y | -3 | -1 |

7 a $7p - 3p = 4p$

b $-12ab - 6ab = -18ab$

c $7x - x = 6x$

d $-5a \cdot -6 = 30a$

e $-3p + p - 8p = -10p$

f $6ac - 7ad = \text{k.n.}$

bladzijde 105

8 a $\text{bedrag} = 18 + 2l + 10l - 100$
 $= 12l - 82$

b $\text{bedrag} = 12 \cdot 14 - 82$
 $= 168 - 82$
 $= \text{€} 86$

9 a $-6p + 3q + p - 7q = -5p - 4q$

b $3a - 8 - -5 - 2a = a - 3$

c $-x - 2y - 2x + 3y = -3x + y$

d $-6ab + 2cd - 8ab - 2cd = -14ab$

10 a $8 \cdot 3p + 5 \cdot 2p = 24p + 10p = 34p$
 b $8 + 3p + 5 + 2p = 13 + 5p$
 c $8 + 3p \cdot 5 + 2p = 8 + 15p + 2p = 8 + 17p$
 d $-3a \cdot -2b + 8a \cdot -3b = 6ab - 24ab = -18ab$
 e $-3a - 2b + 8a - 3b = 5a - 5b$
 f $-3a - 2b \cdot 8a - 3b = -3a - 16ab - 3b$
 g $2 \cdot 3x - 3 \cdot -2 + 4 \cdot -y - 6 =$
 $6x + 6 - 4y - 6 = 6x - 4y$
 h $2 + 3x - 3 - -2 + 4 \cdot -y \cdot -6 =$
 $2 + 3x - 3 + 2 + 24y = 3x + 1 + 24y$

11 a $12a = 18a - 6a$
 b $12a = -6a \cdot -2$
 c $8x^2 = 2x \cdot 4x$

d $-6ac = 2a \cdot -3c$
 e $18a = 6a - -12a$
 f $-7y = y - 8y$

12 a $\frac{3pq}{2q} = \frac{3p}{2}$
 b $\frac{-6xy}{-8xz} = \frac{3y}{4z}$
 c $\frac{3a}{6a} = \frac{1}{2}$

13 a $\frac{2b}{a} + \frac{3b}{a} = \frac{5b}{a}$
 b $-\frac{a}{3b} + \frac{2a}{3b} = \frac{a}{3b}$
 c $\frac{-3x}{7xy} - \frac{4x}{7xy} = \frac{-7x}{7xy} = -\frac{1}{y}$

14 a $\frac{2}{a} - \frac{3}{b} = \frac{2b}{ab} - \frac{3a}{ab} = \frac{2b - 3a}{ab}$
 b $\frac{3}{2y} + \frac{1}{3y} = \frac{9}{6y} + \frac{2}{6y} = \frac{11}{6y}$
 c $-\frac{3}{7} - \frac{2}{p} = -\frac{3p}{7p} - \frac{14}{7p} = \frac{-3p - 14}{7p}$